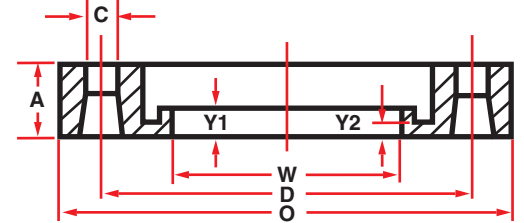
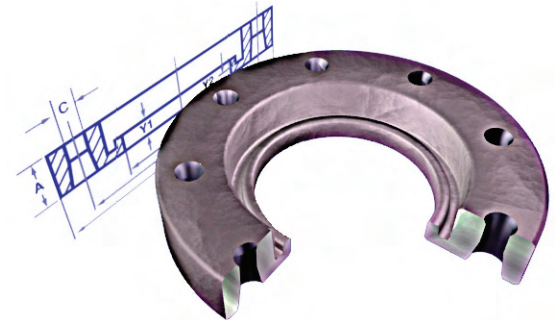




Anchorage - 5326 "A" Street Suite #3 • Anchorage, AK 99518 • (907) 677-9540 Fax (907) 677-9541  
 Big Lake - Mile 3.5 South Big Lake Road • Big Lake, AK 99652 • (907) 892-8440 Fax (907) 892-8408

Nominal Pipe Size	Dimensions, Inches							Weight Lbs	Operating Pressure
	O	Q	W	Y/Y1	n	C	D		
1-1/4ns	4.63	0.63	1.72	0.22	4	0.63	3.50	1.30	267
2	6.00	0.75	2.63	0.23	4	0.75	4.75	2.20	267
3	7.50	0.94	3.75	0.25	4	0.75	6.00	3.90	267
4	9.00	0.94	4.75	0.25	8	0.75	7.50	5.10	267
5	10.00	0.94	5.81	0.27	8	0.88	8.50	6.00	267
6	11.00	1.00	6.88	0.28	8	0.88	8.50	7.00	267
8	13.50	1.12	8.88	0.32	8	0.88	11.75	10.60	267
10	16.00	1.19	11.00	0.49	12	1.00	14.25	15.00	267
12	19.00	1.50	13.13	0.63	12	1.00	17.00	24.40	267
14	21.00	1.63	14.38	0.70	12	1.13	18.75	36.00	267
16	23.50	1.66	16.34	0.70	16	1.13	21.25	48.30	267
18	25.00	1.75	18.38	0.75	16	1.25	22.75	47.90	200
20	27.50	2.08	20.38	0.88	20	1.25	25.00	60.70	200
21.5 / 22	29.50	2.13	21.88	0.75	20	1.38	27.25	71.60	200
24	32.00	2.13	24.38	1.00	20	1.38	29.50	90.40	200
26	34.25	2.38	26.38	1.00	24	1.38	31.75	104.00	180
28	36.50	2.50	28.38	1.00	28	1.38	34.00	116.00	160
32 (800mm)	41.75	2.63	32.12	1.00	28	1.63	38.50	160.00	128
36	46.00	2.76	36.38	1.00	32	1.63	42.75	196.00	100
40 (1000mm)	53.00	3.00	40.00	1.50	36	1.63	49.50	307.00	
42	53.00	3.00	42.38	1.10	36	1.63	49.50	277.00	
48 (1200mm)	59.50	3.50	48.00	1.35	44	1.63	56.00	332.00	



The rings will mate with the following flanges:

- Forged steel flanges, Class 150, per ANSI B16.5
- Plate steel flanges, 150lb. per AWWA c207
- Cast iron flanges, 125 lb. per ANSI B16.1

Convuluted back-up rings, 150# conform to the vital dimensions of ANSI 816.5 such as outside diameter, bolt circle, bolt hole, number and size.

Ductile Iron Material: ASTM 536-80, Grade range from 60/40/18 to 65/45/12.

Finish: Zinc Chromate Primer

The term "convuluted" refers to the cross sectional shape of the ring. The shape allows the usage of less material which affects its original cost as well as shipping and handling costs.